



IHSA's Line Crew Ground Support program

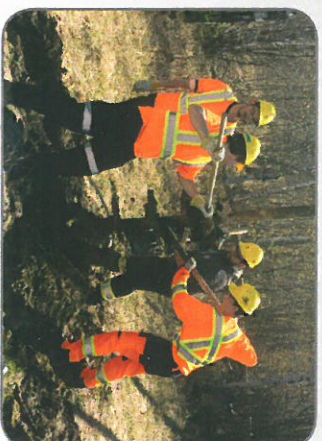
15-Week Certification Program

This program will prepare individuals for integration into employment opportunities in the power line and construction sector. As new power grids and infrastructure projects are being developed across Canada, the need for skilled workers in these industries are increasing.

The Line Crew Ground Support training program is designed to prepare the trainee for entry level opportunities with various power and construction companies seeking safety conscious ready-to-work employees.

Classroom & Practical Training

- Workplace Hazardous Materials Information System (WHMIS)
- Construction Health & Safety
- Confined Space Hazard Awareness for construction
- Traffic Control Temporary Work Zones
- Defensive Driving—Commercial
- Hoisting & Rigging—Basic Safety
- Electrical Safety High Voltage
- Introduction to Electrical Theory
- Propane in Construction
- Safe Pole Handling
- Equipotential Grounding & Bonding
- Working at Heights—Fundamentals of Fall Prevention
- Mobile Crane Operator 0-8 Ton Hydraulic Aerial Equipment
- Securing Anchors
- Rescue Practices
- Ladder Handling
- MSD Prevention Workshop—Trades
- Electrical Safety—Hydrovac Operators



Requirements:

- Valid G driver's licence.
- Must be age 18 or over.
- Grade 12 diploma is preferred.

Applicants with a GED or certificate equivalent, or some high school and can demonstrate the required math and English skills, will be considered on a case by case basis. Academic upgrading and drivers' licence testing may be available in your community.

If you are interested in learning more about taking part in this Ground Crew Line Support program contact **Greg Williamson** at gwilliamson@ihsa.ca