

PROJECT SUMMARY

GOAL

To create a long-term plan to manage and dispose of the Municipality of Greenstone's solid waste.

OVERVIEW

The Municipality is starting an Environmental Assessment process. During this process, engineers will study ways to reduce and manage waste within the region of Greenstone.

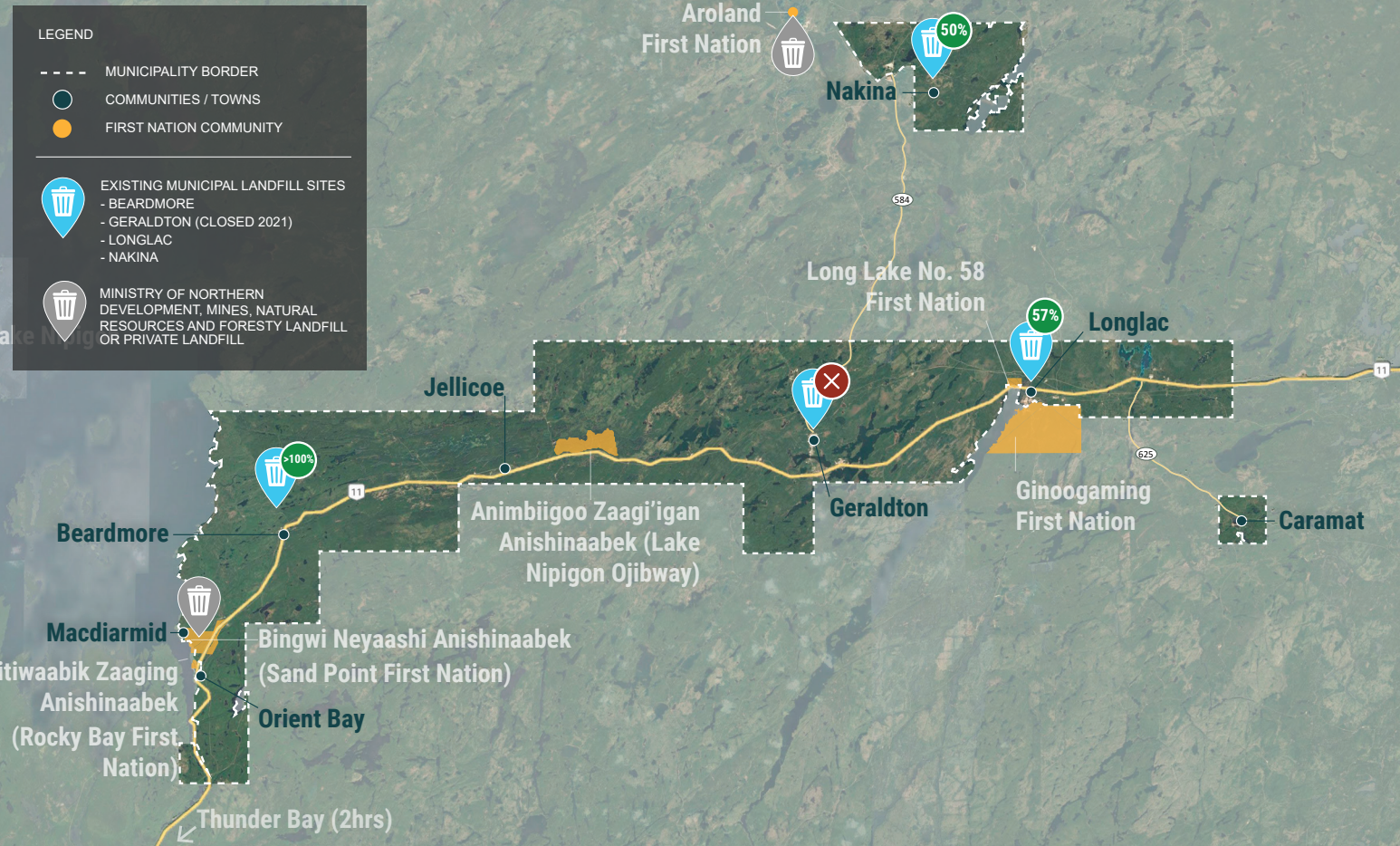
BACKGROUND INFORMATION

There are municipal landfills in the communities of Geraldton, Longlac, Nakina, and Beardmore.

CURRENT CAPACITY

- **Geraldton landfill** was closed in December 2021 at 102% capacity.
- **Longlac landfill** was at 57% capacity as of September 2020. The landfill serves Longlac, Camp 25 Area, Caramat, Pamela & Margo Lake Area, Long Lake #58 First Nation, and Ginoogaming First Nation. As of December 2021, it started servicing Geraldton.
- **Nakina landfill** is currently at 50% capacity, as of December 2021.
- **Beardmore landfill** was over capacity a but as of March 2024 it has received approval for expansion, and currently serves Beardmore, Jellicoe, and Wildgoose area.

EXISTING LANDFILL SITES



ENGAGEMENT TIMELINE



ENVIRONMENTAL ASSESSMENT PROCESS

DETERMINE WASTE MANAGEMENT SYSTEM

The Municipality will study different ways to manage waste. Part of this process will be to make sure any new system is supported by the community and protects the environment. Some examples of new waste management systems are:

- Incineration;
- Compost;
- Landfill expansion;
- Waste diversion and waste re-use;
- New landfill; and
- Export of waste.

The process will also identify potential social, cultural, economic, and environmental drawbacks, as well as ways to reduce them.

SITE SELECTION

A site selection process will be included as part of the evaluation of the new landfill and incineration options. This process will include the following steps:

- 1 Create a list of potential areas and specific sites that could work;
- 2 Based on input from rights holders and stakeholders, study and narrow down the list of potential sites;
- 3 Complete a detailed investigation for each short-listed site;
- 4 Compare the benefits and drawbacks of the short-listed sites and recommend a preferred site; and
- 5 In consultation with rights holders and stakeholders, choose the preferred site.

HOW TO GET INVOLVED

The Municipality of Greenstone invites you to participate in upcoming public and stakeholder engagement to provide your comments and feedback on the project.

To learn more, visit:



www.greenstone.ca



GreenstoneEA@kgsgroup.com